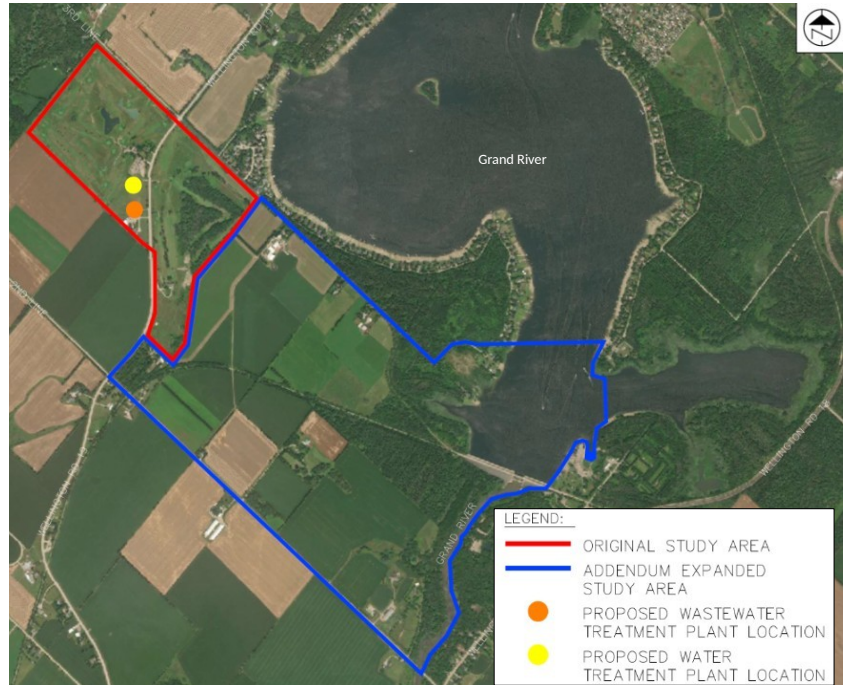


Notice of Study Addendum Commencement Municipal Class Environmental Assessment Fergus Golf Club Redevelopment

Background

Fergus Development Inc. (Geranium) completed a Schedule 'C' Municipal Class Environmental Assessment (Class EA) study in April 2024 to evaluate alternatives for water and wastewater servicing required for the redevelopment of a portion of the Fergus Golf Club lands. The Class EA was completed in accordance with the Municipal Class EA process and received approval from the Ministry of the Environment, Conservation and Parks (MECP).

The preferred water servicing solution identified through the Class EA was to construct a new onsite communal water supply and treatment system, and the preferred wastewater servicing solution was to construct a new onsite communal wastewater treatment plant discharging to the existing irrigation ponds at the Fergus Golf Club. The original study area is shown on the Study Area Map.



Class EA Study Addendum

In response to the current market conditions and to advance the Province's policy objectives and municipal desire to provide more attainable housing, the development concept is being revised to include smaller-unit options. Consequently, water and wastewater servicing alternatives must be updated and re-evaluated to accommodate increased needs. In addition, the development proposal has transitioned from a private condominium subdivision to a subdivision with municipal roads and services. The Township of Centre Wellington is a co-proponent on the Class EA Study Addendum with Fergus Development Inc., enabling broader municipal water and wastewater servicing and treatment alternatives to be considered.

To account for these changes, Fergus Development Inc. and the Township of Centre Wellington, are undertaking a Class EA Addendum. The Class EA Addendum will update population, water and wastewater flow forecasts, re-evaluate alternatives for providing additional treatment capacity (including new wells, advanced wastewater treatment technologies, and alternative effluent discharge options), and identify any other measures required to accommodate the increased population. The study area boundary has also been expanded beyond the original study area to include additional lands required to assess broader water and wastewater treatment alternatives, as shown in the study area map.

Opportunity to Participate

Consultation with interested parties is an integral part of the Addendum process. Fergus Development Inc. and the Township of Centre Wellington would like interested parties to participate and provide input into the Class EA Addendum process. Study notices will be posted on the [FergusGolfEA.ca](https://www.fergusgolf.ca/EA) to inform the public, agencies, other stakeholders and Indigenous Communities of updates and engagement opportunities.

If you would like to be added to the mailing list to receive future notices related to this Class EA Addendum, please send your contact information to either of the contacts listed below.

Theyonas Manoharan, P.Eng.
Project Manager
Fergus Development Inc. (Geranium)
3190 Steeles Avenue East, Suite 300
Markham, ON L3R 1G9
416-524-8096
theyonasm@geranium.com

Colin Baker, P.Eng.
Managing Director of
Infrastructure Services
Township of Centre Wellington
1 MacDonald Square
Elora, ON N0B 1S0
519-846-9691 x 357
CBaker@centrewellington.ca

Micheal Mooney, C.E.T.
Project Manager
Ainley & Associates Ltd.
6299 Airport Rd, Suite 205
Mississauga, ON L4V 1N3
437-452-2366
micheal.mooney@ainleygroup.com

Information will be collected in accordance with the *Freedom of Information and Protection of Privacy Act*. With the exception of personal information, all comments provided will become part of the public record.

This Notice first issued on June 5, 2026.